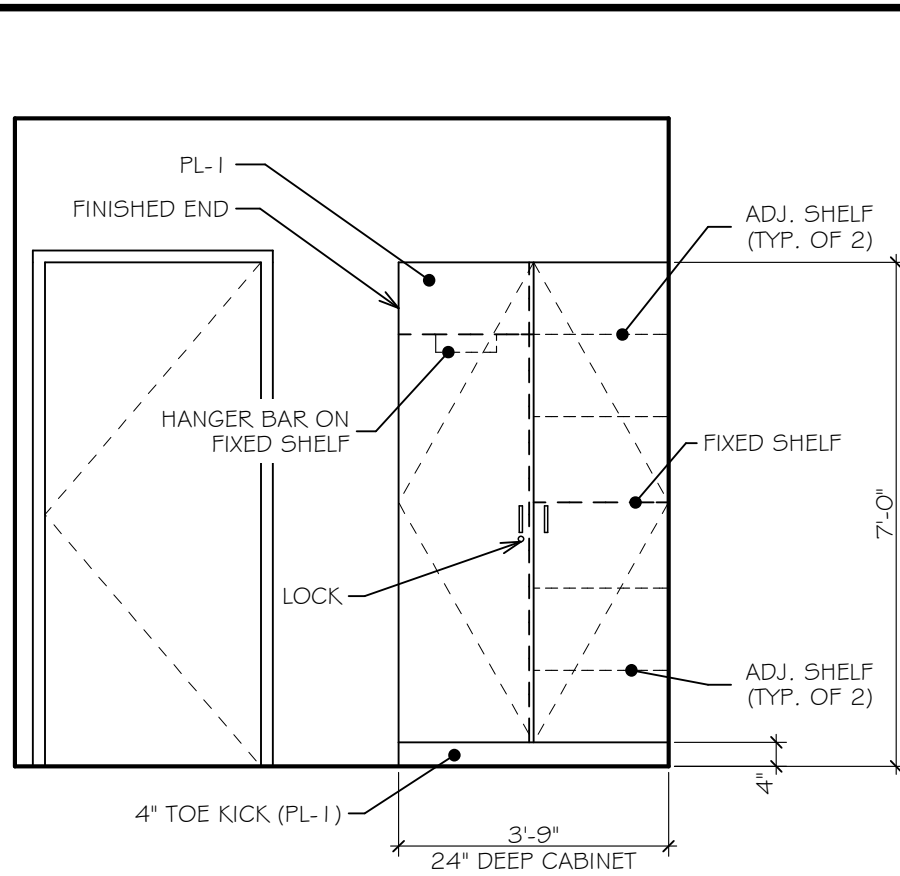


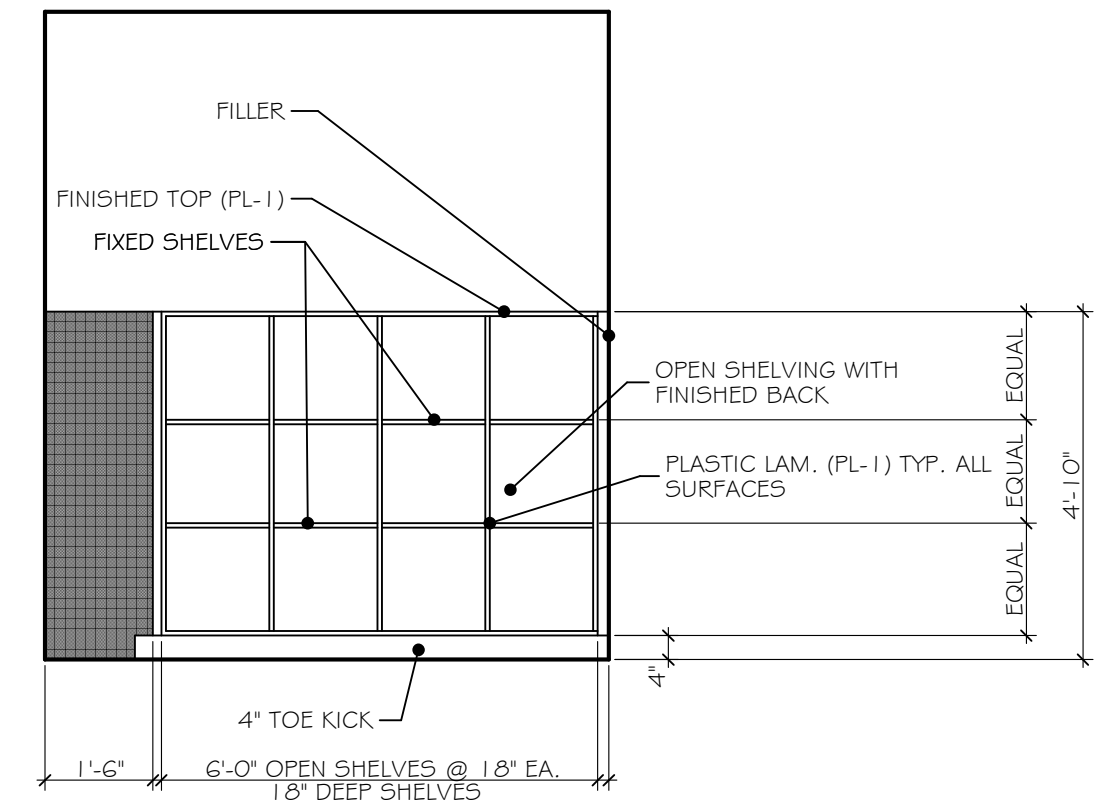
**S100**  
**INT. ELEVATION**

**G**  
**A201** SCALE: 3/8" = 1'-0"



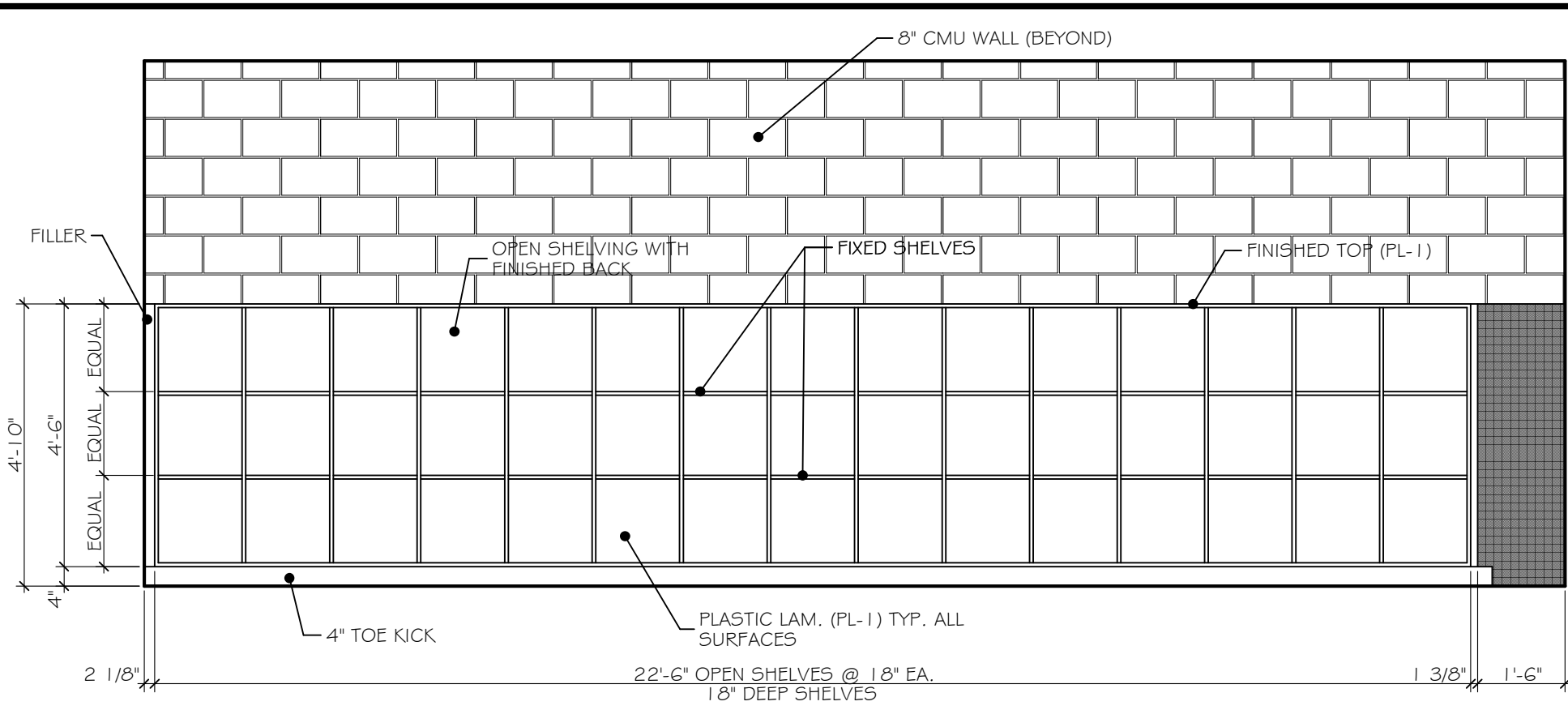
**M120**  
**INT. ELEVATION**

**F**  
**A201** SCALE: 3/8" = 1'-0"



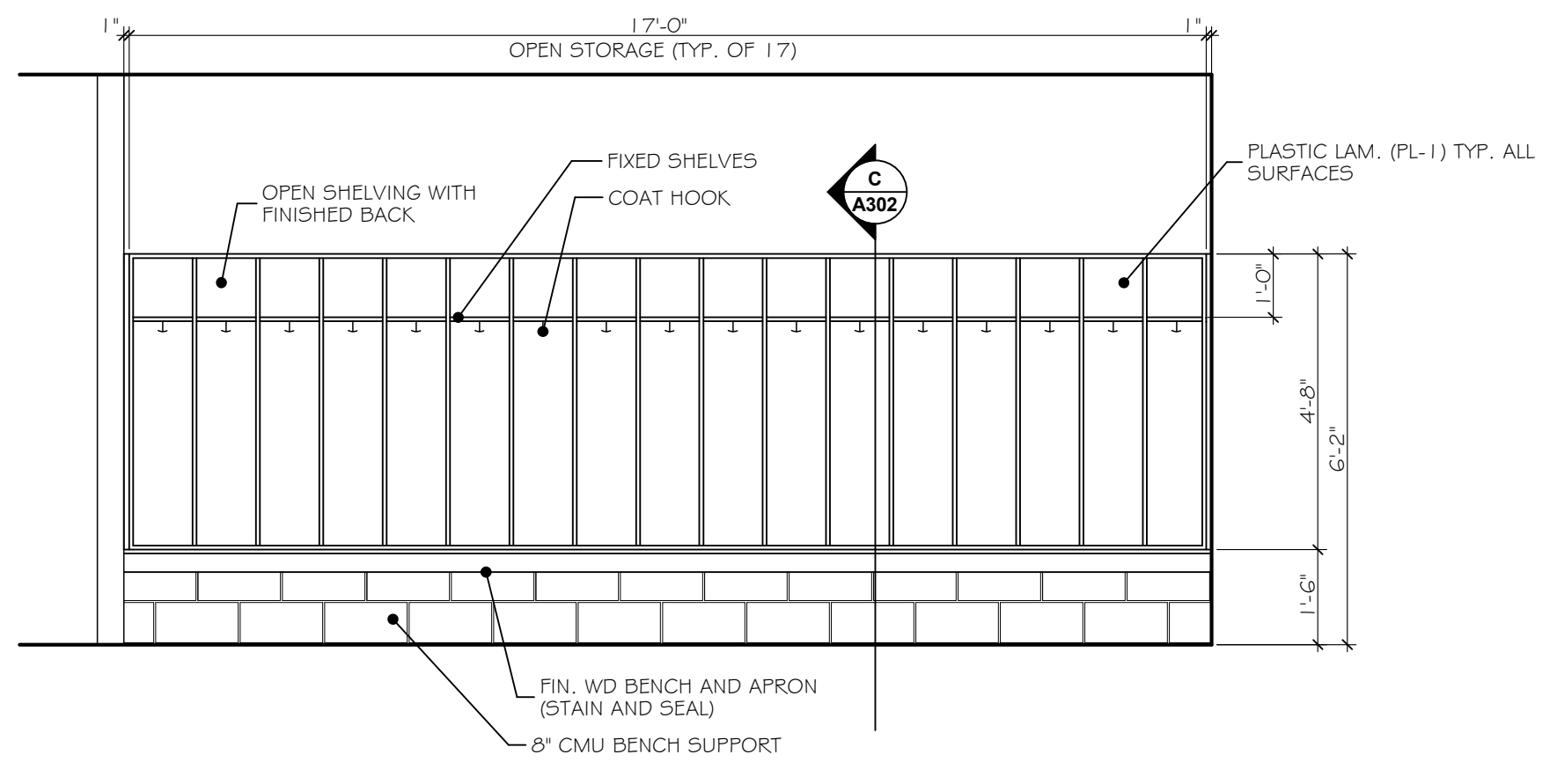
**M123B**  
**INT. ELEVATION**

**E**  
**A201** SCALE: 3/8" = 1'-0"



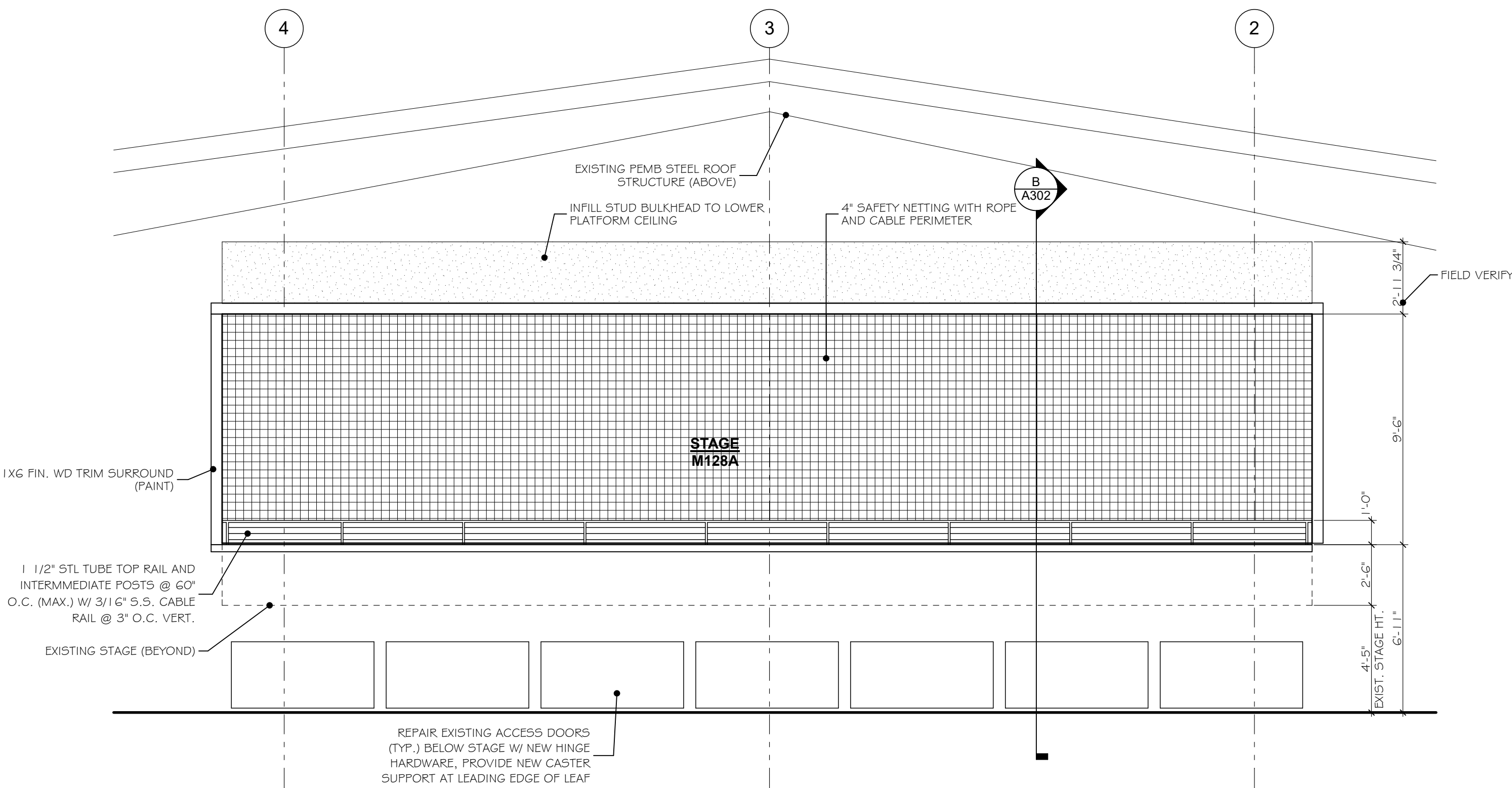
**M123B**  
**INT. ELEVATION**

**D**  
**A201** SCALE: 3/8" = 1'-0"



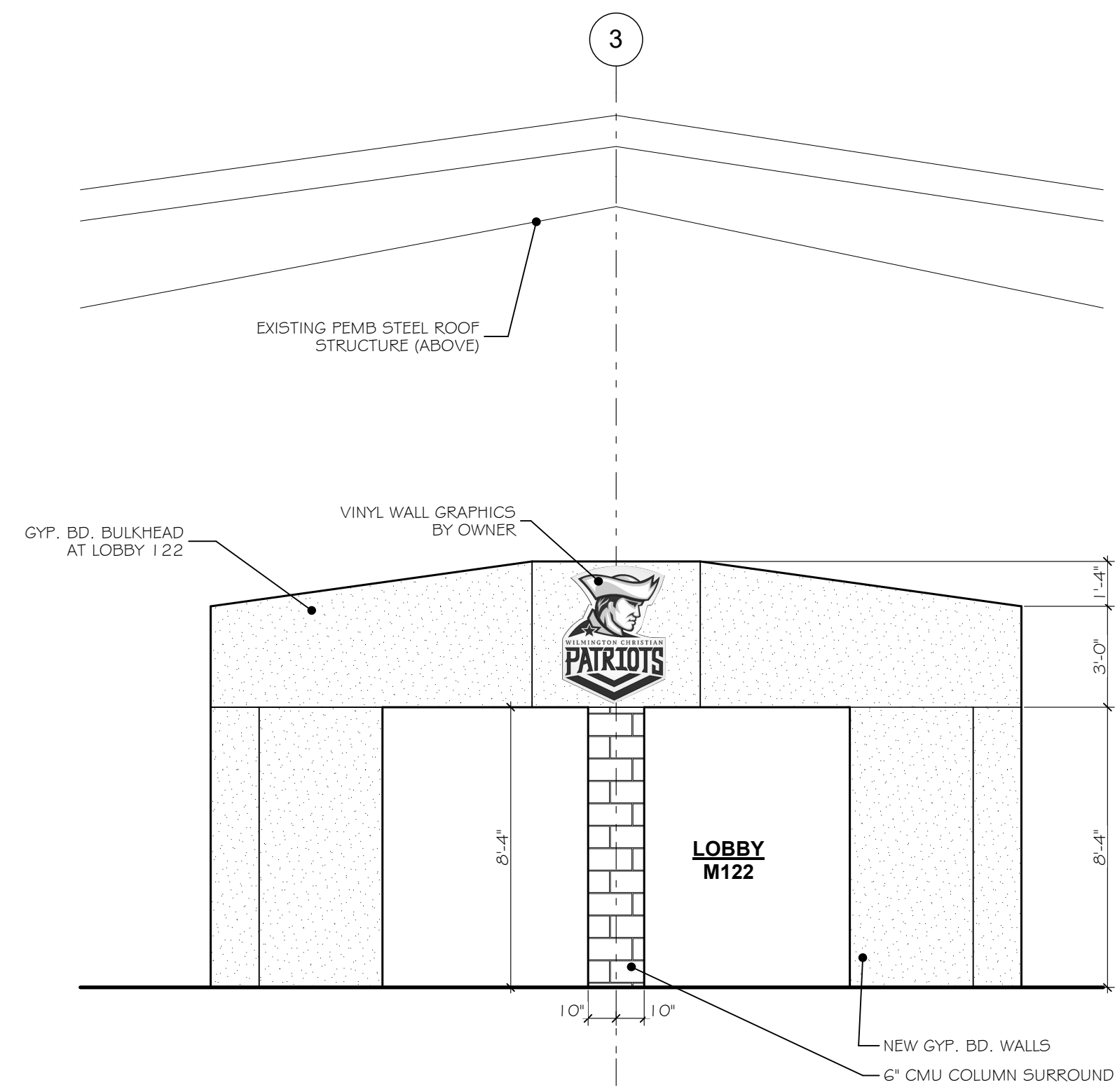
**M118A, M119A**  
**INT. ELEVATION**

**C**  
**A201** SCALE: 3/8" = 1'-0"



**INTERIOR ELEVATION @**  
**WEST WALL OF GYMNASIUM**

**B**  
**A201** SCALE: 1/4" = 1'-0"



**INTERIOR ELEVATION @**  
**EAST WALL OF GYMNASIUM**

**A**  
**A201** SCALE: 1/4" = 1'-0"

## INTERIOR WOODWORK SPECIFICATIONS

**LAMINATE CLAD CABINETS (PLASTIC COVERED CASEWORK):**  
1. A.W.I. TYPE OF CABINET CONSTRUCTION: FLUSH OVERLAY  
2. W.I.C. CONSTRUCTION STYLE: STYLE A, FRAMELESS  
3. W.I.C. DOOR AND DRAWER FRONT STYLE: FLUSH OVERLAY  
4. LAMINATE CLADDING: HORIZONTAL SURFACES OTHER THAN TOPS, GP-50; POSTFORMED SURFACES, PF-42; VERTICAL SURFACES, GP-28; EDGES, COLOR/PATTERN MATCH PVC TAPE  
5. CABINET BOX INTERIORS AND NON-EXPOSED SURFACES: WHITE MELAMINE

**PLASTIC LAMINATE COUNTERTOPS: PREMIUM GRADE (NOT USED)**

1. LAMINATE GRADE: GP-50  
2. GRAIN DIRECTION: PARALLEL TO CABINET FRONTS  
3. EDGE TREATMENT: SAME AS LAMINATE CLADDING ON HORIZONTAL SURFACES

**INTERIOR STANDING AND RUNNING TRIM:**  
1. TRIM FOR TRANSPARENT FINISH: PREMIUM GRADE, HARDWOOD SPECIES 10  
2. TRIM FOR OPAQUE FINISH: FINGER-JOINTED PINE

**SHOP FINISHING OF INTERIOR ARCHITECTURAL WOODWORK:**

1. FINISHES: SAME GRADE AS ITEMS TO BE FINISHED  
2. TRANSPARENT FINISH: A.W.I. FINISH SYSTEM TR-5, CATALYZED VINYL LACQUER  
3. FINISH ARCHITECTURAL WOODWORK AT THE FABRICATION SHOP; DEFER ONLY FINAL TOUCH UP UNTIL AFTER INSTALLATION

**CABINET HARDWARE AND ACCESSORY SCHEDULE:**

1. CONCEALED (EUROPEAN-TYPE) HINGES: BO1 G02  
2. PULLS (GENERAL): HAFELE 100.45.058, 345MM LONG, BRUSHED STAINLESS STEEL FINISH OR APPROVED EQUAL  
3. DRAWER SLIDES: SIDE-MOUNTED, ZINC PLATED STEEL DRAWER SLIDES WITH STEEL BALL BEARINGS, COMPLYING WITH BHMA A156.9, GRADE 1

**SOLID SURFACE MATERIAL COUNTERTOPS: PREMIUM GRADE (KITCHEN AND BATHROOM VANITIES)**

1. FABRICATE TOPS IN ONE PIECE WITH SHOP-APPLIED BACKSPLASHES AND EASED EDGES  
2. SOLID SURFACING MATERIAL THICKNESS: 3 CM (REFER TO ELEVATIONS)  
3. MATERIAL: QUARTZ (HANSTONE)  
4. COLOR: ITALIAN WAVES (RU701)

**NOTES:**

1. UNLESS OTHERWISE NOTED, ALL OPEN CABINETS SHALL HAVE HPL ON ALL INTERIOR SURFACES AND SHELVES.  
2. PROVIDE 3MM PVC EDGE BANDING ON CABINET BOXES AND DOOR EDGES  
3. PROVIDE COMPLETE SHOP DRAWING SUBMITTAL FOR ARCHITECT REVIEW AND APPROVAL PRIOR TO FABRICATION  
4. CABINETS SHALL BE OF 3/4" PLYWOOD CONSTRUCTION

## TYPICAL CASEWORK NOTES

A. ALL CASEWORK COUNTERTOP AND BACKSPLASH AND VERTICAL SURFACES, INCLUDING EDGING, CASING, FINISHED ENDS, DOORS, DRAWERS AND CABINET INTERIORS SHALL BE SELF-EDGED PLASTIC LAMINATE UNLESS OTHERWISE NOTED:

**PL-1:**  
MANUF.: FORMICA  
PRODUCT: STANDARD HPL  
GRADE: 20  
SURFACE FINISH: #58 MATTE  
COLOR: BLACK WALNUT (3485)

**PL-2:**  
MANUF.: NEVAMAR  
PRODUCT: THRU-COLOR HPL  
SURFACE FINISH: AGED BARK (AB)  
COLOR: T.B.D.

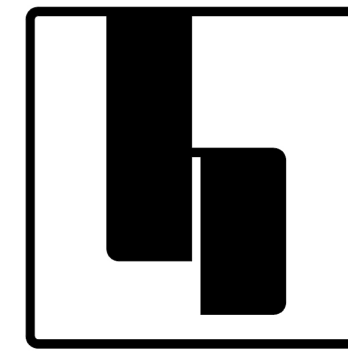
B. FIELD VERIFY ALL DIMENSIONS PRIOR TO FABRICATION.

C. ANY FILLER STRIPS OR FINISHED END PANELS NECESSARY, BUT NOT SPECIFICALLY SHOWN ARE TO BE INCLUDED IN BID.

D. CUT COUNTERTOP OPENINGS FOR SINKS AND COORDINATE WITH PLUMBING CONTRACTOR.

E. REFER TO PLUMBING, MECHANICAL AND ELECTRICAL DRAWINGS FOR ADDITIONAL INFO AND COORDINATION OF WORK.

F. ALL WALL CABINETS SHALL BE 12" DEEP; BASE CABINETS 24" DEEP UNLESS OTHERWISE NOTED.



hostellerarchitecture

■ ARCHITECTURE ■ PLANNING

3967 MARKET STREET  
WILMINGTON, NC 28403

PHONE: 910.612.1119

www.hostellerarchitecture.com

## CONSULTANTS

## RENOVATIONS TO

# GRACE BAPTIST CHURCH

WILMINGTON  
NORTH CAROLINA

HOSTELLER ARCHITECTURE  
STATE REGISTRATION



ARCHITECT OF RECORD  
SHAWN E. HOSTELLER  
11926



CONSTRUCTION DOCUMENTS : 02.08.19

REVISIONS		
MARK	DATE	DESCRIPTION
△		
△		
△		
△		
DRAWN BY:		PROJ. MGR:
SHEET CONTENT		

INTERIOR ELEVATIONS

JOB NO.  
18013

SHEET  
A201